

An Audience with
REAL "Calendar Girl"
TRICIA STEWART



Meet and chat to the
driving force behind the
"Alternative WI Calendar"
whose idea sparked a
fund-raising phenomenon.

A motivating and amusing speaker Tricia
is constantly in demand from audiences
keen to hear her story.

Tuesday 17 September 2013, 8pm

TICKETS £ 7.50 (includes FREE Glass of Wine/Fruit Juice)



THE MILL ARTS CENTRE, BANBURY, OX16 5QE
BOX OFFICE - 01295 279002
or WWW.THEMILLARTSCENTRE.CO.UK

ALL PROFITS TO LEUKAEMIA & LYMPHOMA RESEARCH

GOLD CARD HOLDER



**FOUR PLAYS for LESS THAN the price of
THREE!**

Vouchers for 4 tickets ("Single") or 8 tickets ("Double") included - you choose
which plays to use them for & how many!

PLUS

- ⇒ Free Season Preview Evening Invitation
- ⇒ Free Quarterly Newsletter, *Prompt Please*
- ⇒ Advance Notification of News and Events

- JOIN NOW -

£ 28.00 (Single) / £ 50.00 (Double)

See Front of House / Brochure for details

www.banburycrossplayers.co.uk

NEIL SIMON'S

The Odd Couple

Female Version



Welcome to our summer production of Neil Simon's hilarious "The Odd Couple (Female Version)" where six sassy ladies and two suave "señors" are fired up and ready to entertain you (and yours truly will be keeping the cast and crew in order this time from backstage!).



We believe our 2013/14 season will inspire our actors and entice our audience. In November we open with Tim Firth's *Calendar Girls* (postponed after heavy rains flooded The Mill) - the true story of 11 Yorkshire women who posed nude for an 'alternative' WI calendar, raising funds for Leukaemia & Lymphoma Research. Please note, tickets dated 2012 will not be valid for the 2013 performances. If you hold a 2012 ticket and wish to attend a 2013 performance in November, please contact The Mill Box Office.

In March 2014, we bring you award-winner Yasmina Reza's *God of Carnage*, directed by Terry Gallagher. A playground altercation between 11 year old boys brings together two sets of parents to try and resolve the matter. Diplomatic niceties are initially observed but as the meeting progresses and the alcohol flows, tensions emerge and the gloves come off. "Reza's sharpest work since *Art*" says Variety.

In May 2014 Linda Shaw & Bruce Walton direct Shakespeare's comedy *Twelfth Night*. Shipwrecked in Illyria and separated from her twin, Viola disguises herself as a man to be near Orsino who only has eyes for Olivia and she will have none of him. Clown Feste, Malvolio and those yellow stockings and a drunken Tony Belch are among the cast romping their way through confusion and misdirection reaching a highly amusing and satisfactory conclusion.

We close in July 2014 with my production of Shelagh Stephenson's award-winning *The Memory of Water*. On the eve of their mother's funeral three sisters meet, bicker and reveal conflicts of the past and its grip on the present, the strains of family relationships and the distortions of memory. A superb mix of humour and bruising emotion.

You can hear more about these plays from the Directors at our Season Preview Evening on 15th October 2013.



Huge thanks for your continued support of Banbury Cross Players and we look forward to welcoming you again in November!

Tara Lacey
Chairman



The history of New York begins around 10,000 BC when the first Native Americans arrived. By 1100AD, New York's main tribes, the Iroquoian and Algonquian, had developed. European discovery of New York was led by the French in 1524 and the first land claim came in 1609 by the Dutch. As part of New Netherland, the colony was important in the fur trade. In 1626, the Dutch bought the island of

Manhattan from Native Americans and in 1664, England renamed the colony New York, after the Duke of York. New York City gained prominence in the 18th century as a major trading port.

New York hosted significant transportation advancements in the 19th century including the first steamboat line in 1807, the Erie Canal in 1825, and America's first regularly scheduled rail service in 1831. New York City became the main

entry point for European immigrants to the United States. Millions came through Castle Clinton in Battery Park before Ellis Island opened in 1892. The Statue of Liberty opened in 1886 and became a symbol of hope. New York boomed in the Roaring Twenties before the Wall Street Crash of 1929.



Following World War Two, the state experienced significant suburbanization and most cities shrank. The Thruway system opened in 1956 signalling another era of transportation advances.

After a period of near-bankruptcy, New York City renewed its stature as a cultural centre, attracted more immigration and hosted the development of new music styles. The City became a media capital over the second half of the 20th century, hosting most national news channels and broadcasts as well as globally-renowned newspapers.



New York entered a new era after the September 11 attacks in 2001 - the worst terrorist attack ever to take place on American soil when two hijacked passenger jets crashed into the World Trade Center, destroying them, and killing almost 3,000 people.



Plans for a rebuilt World Trade Center took form. The first new building at the site opened in May 2006. The new World Trade Center complex will include one World Trade Center, three other high-rise office towers, and the National September 11 Memorial & Museum.

Director
Liz Riley

Stage Manager
Tara Lacey

ASM
Rob Hall
Brenda Williams

Lighting
John Hicks

Sound
Mark Neale

Props
Jayne Buzzard
Marilyn Fairbairn
Kate Groves
Dave Robinson
Brenda Williams
Helen Williams
Tina Williams

Costume
Jane Shanahan

Hair
Anne Twigg

Make Up
Jenny Tustian

Set Design & Construction
Richard Ashby
Peter Bloor
Nik Lester

Prompt
Gill Huband

Production Manager
Jane Young

The Odd Couple

Mickey
Renee
Vera
Sylvie
Olive Madison
Florence Ungar
Manolo Costazuela
Jesus Costazuela



Lorna Gemmell
Jan Batchelor
Ann Westcott
Linda Shaw
Trish Thompson
Janice Lake
Ian Nutt
Philip Fine

**Olive Madison's six room apartment on Riverside Drive,
New York. 1980s**

Act 1 - A hot summer evening
INTERVAL

Act 2 Sc 1 - Two weeks later, 10pm
Act 2 Sc 2 - A few days later, early evening
Act 2 Sc 3 - The next evening, 7.30pm

Electronic cigarettes are used during this performance

**Patrons are requested to switch off mobile phones before the performance begins
and are reminded that photography and video recording are strictly prohibited**

Emergency exits are to the left of the stage area and to the rear of the auditorium

In case of emergency, please follow instruction from Front of House staff



Front of House Managers
Dave Ellis, Mike Jack

Foyer Display
Clare Lester

Members of the Society
built the Set and
staffed Front of House

The Mill Management & Staff
Banbury Guardian
The Banbury Cake
Castle Quay Shopping Centre
Fairprint UK
Pan Designs
St Mary's Church
KallKwik
Holt Hotel

Marlborough Rd Methodist Church
Banbury Town Council
Katharine House Hospice Shop
Mark Green Photography
Philip Rigby, A D & D Photographic Society

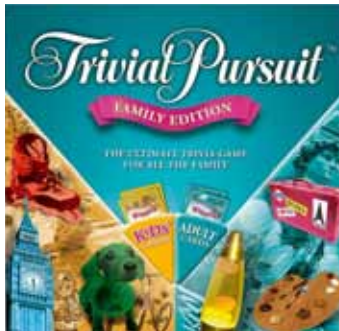
Trivial Pursuit was created in 1979 in Montreal, Canada, by Chris Haney, a photo editor for Montreal's *The Gazette* and Scott Abbott, a sports editor for *The Canadian Press*. After finding pieces of their Scrabble game missing, they decided to create their own game and with the help of John Haney and Ed Werner, the game was released in 1982 - designed by Michael Wurstlin.



Its popularity peaked in 1984 when over 20 million games were sold. The rights were licensed to Selchow & Righter in 1982 then to Parker Brothers (now part of Hasbro) in 1988 after being turned down by the Virgin Group. Hasbro bought the full rights for US\$80 million in 2008. By 2004, nearly 88 million games had been sold in 26 countries and 17 languages. An online version was launched in September 2003.



Questions are split into six categories each with its own colour. In the classic game these are Geography (blue), Entertainment (pink), History (yellow), Arts & Literature (brown), Science & Nature (green) and Sports & Leisure (orange). Playing pieces are round and divided into six sections. A small wedge is placed into each section to signify a correctly answered question. Having collected one wedge of each colour that player makes their way to the centre to answer a question in a category selected by the others. If answered correctly, that player wins the game.



So, are you going to be rummaging in your loft this weekend to brush the dust off your General Knowledge? And do you know who was known as the Queen of Republic Pictures in the 1940s? You will after tonight's performance!

NEIL SIMON was born on 4 July 1927 and grew up in New York during the Great Depression. His was a mostly unhappy childhood and he took refuge in cinema where he enjoyed watching early comedians like Charlie Chaplin. After graduating high school and spending a few years in the Army Air Force Reserve he began writing comedy scripts for radio and popular television shows such as *The Phil Silvers Show* and Sid Caesar's *Your Show of Shows* where he worked with young writers including Mel Brooks and Selma Diamond.

Come Blow Your Horn (1961) took three years to complete and ran for 678 performances on Broadway. It was followed by two more successful plays, *Barefoot in the Park* (1963) and *The Odd Couple* (1965) for which he won a Tony Award, making



him a national celebrity and "the hottest new playwright on Broadway". During one season, he had four successful plays showing on Broadway at the same time and in 1983 became the only living playwright to have a New York theatre named in his honour.

After winning the Pulitzer Prize for drama in 1991 for *Lost in Yonkers*, critics began to take notice of the depths, complexity and issues of universal interest in his stories. His comedies were based around subjects such as marital conflict, infidelity, sibling rivalry, adolescence, and fear of aging. Most of his plays were partly autobiographical, portraying his troubled childhood and different stages of his life, creating characters who were typical New Yorkers and often Jewish, like himself. Simon's facility with dialogue gives his stories a rare blend of realism, humour and seriousness which audiences find easy to identify with.

He has written over thirty plays and nearly the same number of movie screenplays, most adapted from his plays and has received more Oscar and Tony nominations than any other writer.